



LAFAYETTE

KT-135

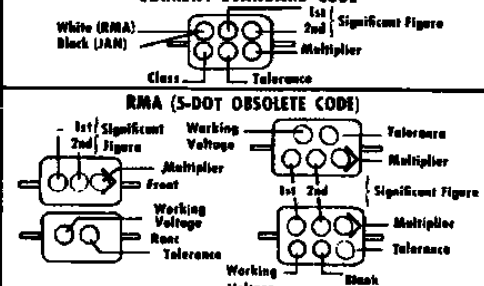
**“Explor-Air”
4-Band Receiver Kit**

ASSEMBLY MANUAL

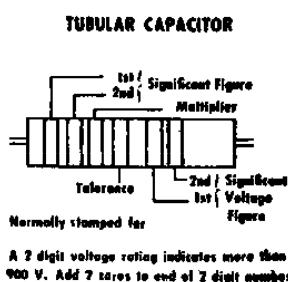
STANDARD COLOR CODE — RESISTORS AND CAPACITORS

INSULATED UNINSULATED	FIRST RING BODY COLOR First Figure	SECOND RING END COLOR Second Figure	THIRD RING DOT COLOR Multiplier	FOURTH RING END COLOR Tolerance
Color				
BLACK	0	0	1	
BROWN	1	1	10	
RED	2	2	100	
ORANGE	3	3	1,000	
YELLOW	4	4	10,000	
GREEN	5	5	100,000	
BLUE	6	6	1,000,000	
VIOLET	7	7	10,000,000	
GRAY	8	8	100,000,000	
WHITE	9	9	1,000,000,000	
GOLD				5%
SILVER				10%
NO COLOR				20%

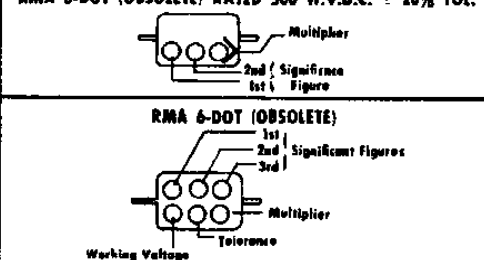
MOLDED MICA TYPE CAPACITORS



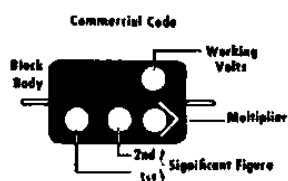
MOLDED PAPER TYPE CAPACITORS



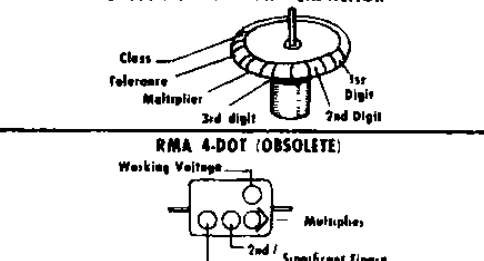
RMA 3-DOT (OBSOLETE) RATED 500 W.V.D.C. : 20% TOL.



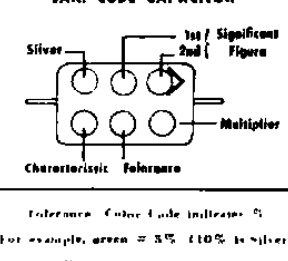
MOLDED FLAT CAPACITOR



BUTTON SILVER MICA CAPACITOR



JAN. CODE CAPACITOR



ASSEMBLY MANUAL FOR LAFAYETTE KT-135 4-BAND RECEIVER

UNPACKING INSTRUCTIONS

Unpack the kit carefully, and check each part against the parts list before starting construction. A color code chart is provided to help you identify questionable parts and determine component values. Some components may differ slightly from the specified values given in the parts list. Such minor differences (where the supplied value falls within the listed tolerance for the component, such as a 510K resistor for a 470K 10% resistor) do not indicate an error. These substitutions are checked carefully before being made, and are only made in circuits allowing such substitution. Any large variation from the specified value or shortage of parts should be reported to us immediately. Include with your letter, the inspection slip from the package.

As you unpack the kit and check the various parts against the parts list, you may find it to your advantage

to group certain parts and place them in suitable containers. In any event, the parts should be placed where they are readily available and will not become lost or damaged.

DAMAGE IN SHIPMENT

If your kit was damaged in shipment, please notify us immediately, describing the damage, and get in touch with the carrier so that you can make a claim. We will cooperate fully in such cases, but please note that only you can recover from the carrier.

TOOLS YOU WILL NEED

Just a few standard tools are all you will need to successfully assemble this kit. You should use a small iron (about 25 to 75 watts) for soldering. A pair of long-nose pliers, a pair of diagonal or side-cutting pliers, a small screwdriver, and a small adjustable wrench complete your tool requirements.

PARTS LIST KT-135

RESISTORS

PART NO.	DESIGNATION	DESCRIPTION	QUANTITY
13-1	R3, R9	100K $\frac{1}{2}$ w. 10% resistor (brown black yellow silver)	2
13-3	R2	2.2 Meg. $\frac{1}{2}$ w. 10% resistor (red red green silver)	1
13-4	R8	47K $\frac{1}{2}$ w. 10% resistor (yellow violet orange silver)	1
13-5	R1	1.0 Meg. $\frac{1}{2}$ w. 10% resistor (brown black green silver)	1
13-18	R7	4700 ohm $\frac{1}{2}$ w. 10% resistor (yellow violet red silver)	1
13-33	R10	27K $\frac{1}{2}$ w. 10% resistor (red violet orange silver)	1
13-34	R5	180 ohm $\frac{1}{2}$ w. 10% resistor (brown gray brown silver)	1
13-82	R6	270 ohm $\frac{1}{2}$ w. 10% resistor (red violet brown silver)	1
13-83	R4	200 ohm $\frac{1}{2}$ w. resistor	1

CAPACITORS

12-3	C5	100 μ ceramic disc	1
12-8	C7, C10, C13, C14, C16	0.01 μ ceramic disc	5
12-22	C6	470 μ ceramic disc	1
12-31	C9	270 μ ceramic disc	1
12-36	C15	0.005 μ ceramic disc	1
12-60	C8	390 μ ceramic disc	1
12-61	C12	750 μ ceramic disc	1
12-61	C11	10 μ , 25 volt tubular electrolytic	1
12-59	C4	30-30-30 μ f, 150 volt tubular electrolytic	1
12-56	C1	3.4-23 μ variable air trimmer	1
12-57	IBANDSPREAD! C2	5-80 μ variable mica trimmer	1
12-58	IANTENNA TUNING! C3	2 gang variable capacitor	1
	I MAIN TUNING!		

SWITCH & CONTROLS

PART NO.	DESIGNATION	DESCRIPTION	QUANTITY
11-26	Control H	500K audio taper control with SPST switch	1
11-27	Control J	500 ohm linear taper control	1
14-19	Switch K	3 pole 4 position rotary switch	1

TRANSFORMER AND COILS

PART NO.	DESIGNATION	DESCRIPTION	QUANTITY
15-13	T1	Output transformer	1
23-9	L-1	500 μ h RF choke	1
23-10	Band A coil	550 KC to 1600 KC coil	1
23-11	Band B coil	1650 KC to 5.5 MC coil	1
23-12	Band C coil	5 MC to 17 MC coil	1
23-13	Band D coil	17 MC to 30 MC coil	1

TUBES

26-20	12AT7		1
26-23	35W4		1
26-26	50C5		1

SOCKETS, JACKS, AND TERMINAL POSTS

PART NO.	DESIGNATION	DESCRIPTION	QUANTITY
19-17	Sockets 8 & C	7 pin miniature socket	2
19-24	Socket A	9 pin miniature socket	1
19-25	Jack D	closed circuit telephone jack	1
20-88	Antenna post	antenna binding post	1
20-10	Term. post 88	2 lug terminal post	1
20-78	Term. post CC	3 lug terminal post	1
20-8	Term. post FF2	1 lug terminal post	1
20-89	Term. post AA	6 lug terminal post	1

CHASSIS AND FRONT PANEL

10-45	Front panel		1
10-44	Chassis		1

HARDWARE AND MISCELLANEOUS PARTS

PART NO.	DESCRIPTION	QUANTITY
18-20	Knob with plastic pointer	2
18-21	Knob with white indicating line	4
20-84	4" PM loudspeaker	1
20-85	Extruded washer for 19-25 phone jack	1
20-86	Flat fiber washer for 19-25 phone jack	1
20-87	Flat fiber washer for 20-88 antenna post	1
20-90	$\frac{1}{4}$ " to $\frac{1}{2}$ " insulated extender shaft	1
20-4	6' line cord with plug	1
20-93	Ground lug for #10 screw	1
20-91	1 $\frac{1}{4}$ " x $\frac{1}{4}$ " brass spacers for #6 screw	3
20-24	Ground lug for #6 screw	1
20-3	Wire strain relief	1
22-11	$\frac{1}{32}$ x $\frac{1}{4}$ " machine screws	4
22-10	$\frac{1}{40}$ x $\frac{1}{4}$ " machine screws	14
22-16	#4 internal tooth lockwashers	22
22-23	#4 flat washers	4
22-18	$\frac{1}{4}$ " x $\frac{1}{4}$ " brass spacers for #6 screw	2
22-57	#4 x $\frac{1}{2}$ " oval head wood screws	4
22-14	$\frac{1}{40}$ hex nuts	22
22-47	$\frac{1}{32}$ x 1 $\frac{7}{16}$ machine screws	3
22-24	$\frac{1}{40}$ x $\frac{1}{4}$ " machine screws	6
22-58	Cup washers for #4 wood screws	4
22-20	$\frac{3}{8}$ " x 32 hex nuts for controls and switch	3
22-21	$\frac{1}{4}$ " internal tooth lockwashers for controls and switch	3
22-17	#6 internal tooth lockwashers	2
22-22	#10 internal tooth lockwashers	1

WIRE

PART NO.	DESCRIPTION	QUANTITY
21-11	Yellow wire	2'
21-12	Green wire	5'
21-14	Blue wire	3'
21-15	Black wire	7'
21-16	Red wire	3'
21-17	#20 solid bare tinned wire	6"
20-104 A	60/40 solder	15'

INTRODUCTION

The Lafayette Model KT-135 EXPLOR-AIR is a 4-Band regenerative receiver, having excellent sensitivity and selectivity for a unit of this type. The following Bands are covered:

550 KC	to	1600 KC
1650 KC	to	5.5 MC
5.5 MC	to	16 MC
16 MC	to	30 MC

These frequency bands provide coverage of standard AM broadcasts, foreign, amateur, maritime and mobile stations, and the National Bureau of Standards

station, WWV, which transmits standard radio and audio frequencies and time signals.

THE EXPLOR-AIR employs a 12AT7 dual triode as a regenerative detector and first audio amplifier, a 50C5 audio output stage, and a 35W4 rectifier. A 4" loudspeaker is used for normal listening, and a jack is provided for operation with headphones if desired.

The KT-135 operates on 105 to 125 volts AC or DC, at a power consumption of 25 watts.

STEP-BY-STEP INSTRUCTIONS

The instructions which follow have been carefully planned and arranged in the most logical and practical sequence possible. Skilled engineers and technical writers have prepared these instructions while actually assembling samples of this kit. We are certain that we have provided you with the best and fastest method of assembling your "EXPLOR-AIR" receiver. Each instructional step should be read and thoroughly understood before it is performed. In this way, errors will be avoided. Check off each step in the check space () provided. In this way you will avoid omitting any steps. You might also use a colored pencil to cross out each wire and component

on the wiring pictorials after installation. Assembly and wiring pictorials have been provided to assist you in following the step-by-step instructions. All components have been assigned letter and/or number designations. Those components which also appear on the schematic diagram have been assigned the same designations on the wiring pictorials. Other components, such as terminal strips, solder lugs, etc. have been assigned letter and/or number designations following, in general, the order in which they are installed.

MECHANICAL ASSEMBLY

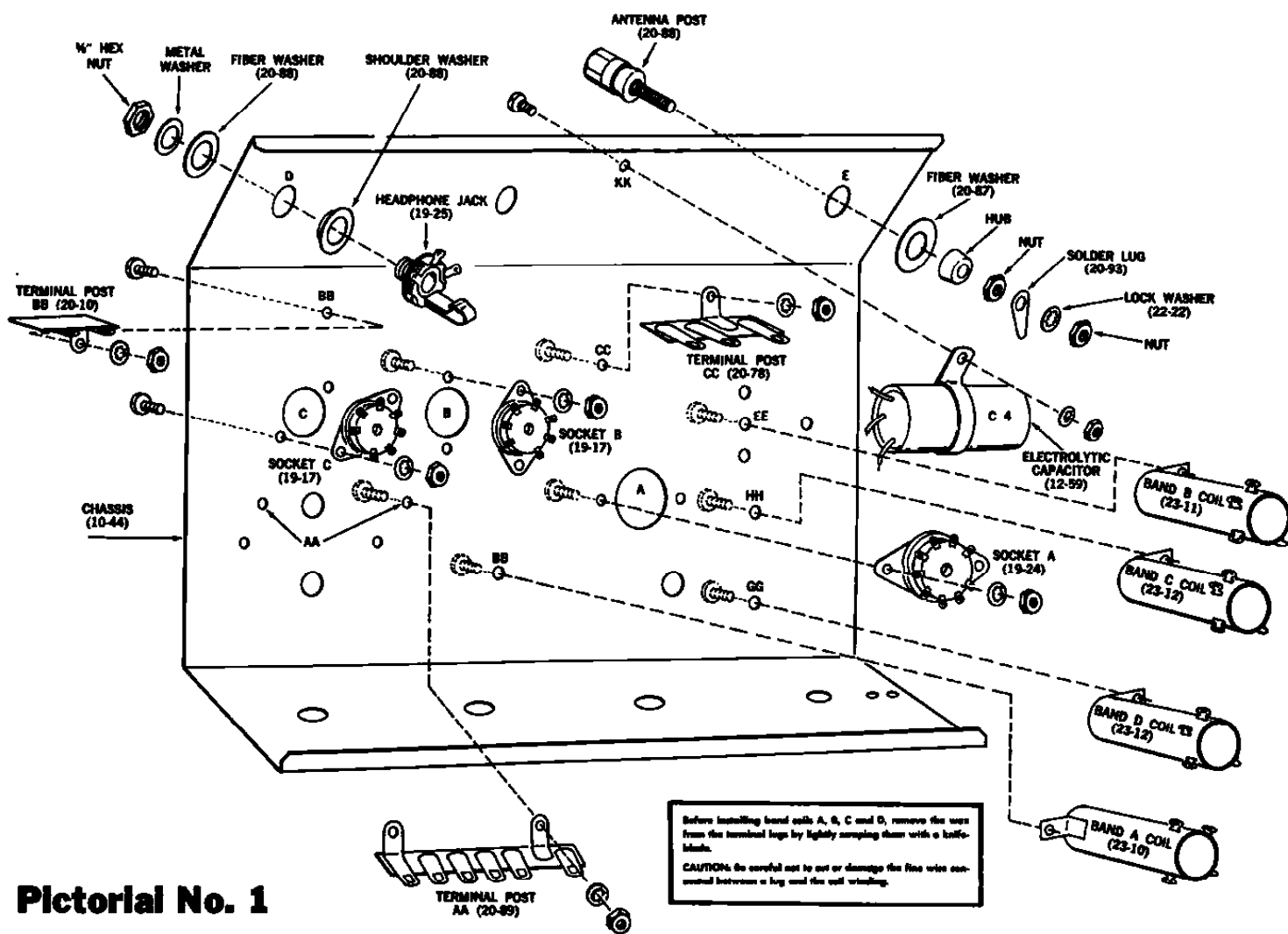
The first step in the assembly of the KT-135 Receiver is to mount all the sockets, terminal posts, etc. on the chassis with their associated hardware. To assist you in assembling these parts, four mechanical assembly views are shown which supplement the step-by-step instructions. Pictorial 1 is an exploded view of the main chassis and the parts to be mounted. In order to clarify the drawing net all the mounting hardware is shown. The amount of hardware used to assemble each part is specified in the step-by-step instructions.

NOTE: 4-40 Hardware (2) means to use two 4-40 x 1/4" screws, two #4 lockwashers, and two 4-40 x 1/4" hex nuts to mount the part.

Observing Pictorial 1, mount the following components as shown:

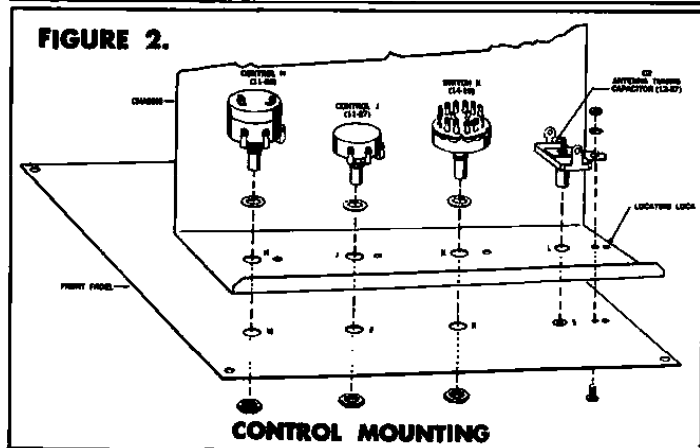
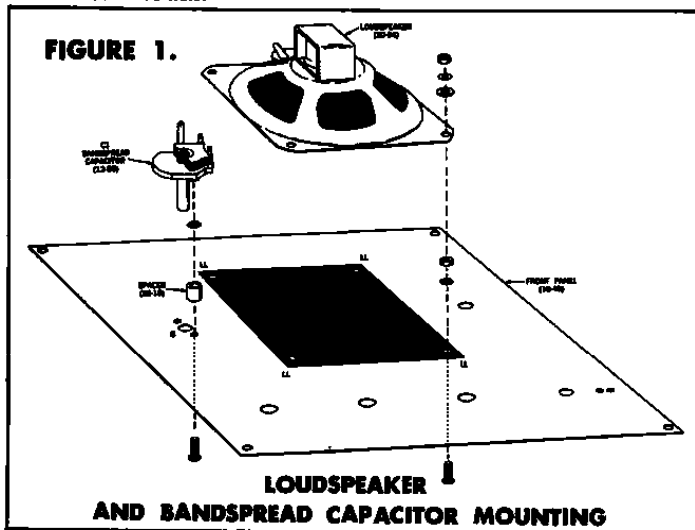
- () Using 4-40 hardware (2), mount the 9 pin miniature tube socket A (part #19-24) in the chassis hole A, observing the position of the wide space between the pins on the socket.
- () Using 4-40 hardware (2), similarly mount the 7 pin miniature tube socket B (part #19-17) in hole B.

- () Using 4-40 hardware (2), similarly mount the 7 pin miniature tube socket C (part #19-17) in hole C.
- () Using 4-40 hardware (2), mount the 6-lug terminal post AA (part #20-89) at AA.
- () Using 4-40 hardware (1), mount the 2-lug terminal post BB (part #20-10) at BB.
- () Mount the headphone jack D (part #19-25) in hole D. Jack mounts with 3/8" hex nut, metal washer, fiber washer (part #20-56) and fiber shoulder washer (part #20-85) as shown. Orient jack as shown in Pictorial 1.
- () Mount the 3 lug terminal post CC (part #20-78) at CC. Use 4-40 hardware (1).
- () Mount the antenna post E (part #20-88) in hole E. The antenna post mounts with two hex nuts, fiber washer (part #20-87), soldering lug (part #20-93), and a #10 lockwasher, as shown in Pictorial 1.
- () Using a 6-32 x 1/4" screw and a #6 lockwasher, mount the "Band A" coil (part #23-10) at DD.

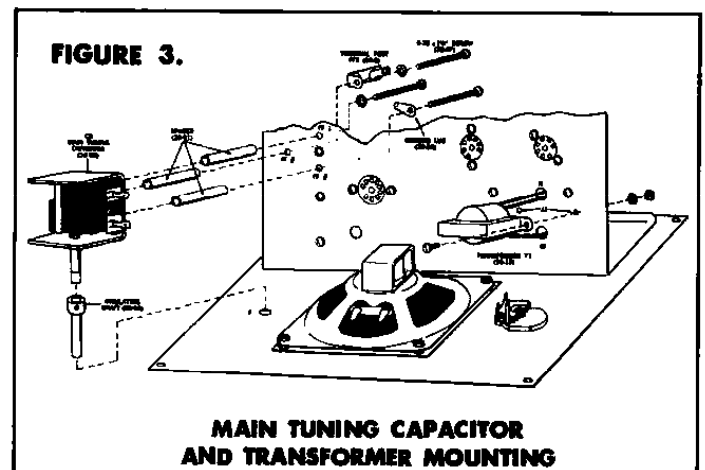


Pictorial No. 1

10. () Now observe Figure 1, which shows the mounting of the loudspeaker and the bandspread capacitor to the front panel. First attach (4) 4-40 x 1/2" screws to panel at four holes LL. Fasten with four #4 lockwashers and four 4-40 nuts. Then mount the loudspeaker (part #20-84) to the four screws, and attach with four flat washers, four #4 lockwashers, and four 4-40 nuts.



11. () Mount the bandspread capacitor C1 (part #12-56) at G. Use two 4-40 x 1/2" screws, two 1/4" spacers, two #4 lockwashers, and two 4-40 nuts. Position C1 as shown in Figure 1.
12. () Attach the front panel to the chassis as shown in Figure 2 by mounting the control H (part #11-26) in the holes H on the chassis and the front panel. Mount using a 3/8" lockwasher and 3/8" hex nut as shown in Figure 2. Be sure the holes J, K, and L in the front plate line up with holes J, K, and L in the chassis before tightening the nut on the control H.
- Note: Make sure the locating tab (on the face of the control) enters the small hole provided in the chassis.
13. () Similarly, mount the control J (part #11-27) in the hole J.
14. () Similarly, mount the switch K (part #14-19) in the hole K.
15. () Using 4-40 hardware (11), mount the antenna tuning capacitor C2 (part #12-57) in the hole L. Position as shown in Figure 2.
16. () Now observe Pictorial 1. Using a 6-32 x 1/4" screw, mount "Band B" coil (part #23-11) at EE.
17. () Using a 6-32 x 1/4" screw, mount the "Band D" coil (part #23-13) at GG.
18. () Using a 6-32 x 1/4" screw, mount the "Band C" coil (part #23-12) at HH.
19. () Now observe Figure 3. Attach the insulating shaft (part #20-90) to the shaft of the main tuning capacitor C3 (part #12-58). Push insulating shaft all the way onto C3 shaft and tighten the set screw against the flat of the C3 shaft.



20. () Mount the main tuning capacitor C3 at the three holes FF, as shown in Figure 3. Use three 6-32 x 1 7/16 screws, three 1 3/8" spacers (part #20-91), two #6 lockwashers, 1 ground lug (part #20-24), and 1 terminal post part #20-81. Mount the terminal post FF2 under the screw at hole FF2, and the ground lug under the screw at FF3 as shown.

21. () Refer to Figure 3. Feed the red and blue leads of the output transformer, T1 (part #15-13), through hole N, and the yellow and black leads through hole M. Mount T1 at the two holes JJ using 4-40 hardware (2).

22. () Mount the 30-30-30 μ f, 150 volt electrolytic capacitor C4 (part #12-59) at KK, as shown in Pictorial 1. Use 4-40 hardware (1).

The mechanical assembly of the chassis is now completed.

READ CAREFULLY BEFORE PROCEEDING NOTES ON WIRING

Each EXPLOR-AIR kit is supplied with more than enough hookup wire for complete wiring. A length of insulated hookup wire, unless otherwise specified, should have about 1/4" of insulation removed or "stripped" from each end. Excessive wire exposure increases the possibility of shorts to nearby wiring or terminals. Use a razor blade or sharp knife to cut off the insulation; during this operation, be sure not to cut into the wire itself. The length to which each hookup wire is to be cut is specified in the step-by-step instructions, and allowance has been made for the removal of the insulation from each end. The hookup wire supplied is solid wire, but some of the transformer leads are stranded; the latter should be tinned (coated with solder) before connecting to the specified point. To prepare these transformer leads, remove a 1/4" length of insulation from the end of the lead, twist all the strands together with your fingers, and tin the end. To connect a wire to a lug as specified in the step-by-step instructions, put about three-quarters of the bared end of the wire through the hole in the lug, and then, using the long-nose pliers, wrap the wire around the lug.

NOTES ON SOLDERING

The importance of good soldering technique in the construction of fine quality kits such as the KT-135 cannot be overemphasized. Good solder joints are essential if you are to realize the quality and stability of performance that has been engineered into your receiver. If you are inexperienced in soldering, we suggest that you spend a little time practicing with pieces of scrap wire and an old tube socket or terminal strip before attempting to do any soldering on your kit. The purpose of soldering an electrical connection is to provide a permanent electrical bond between the wires and terminals to be joined. This prevents the formation of corrosion which insulates or produces unwanted resistance between the joined parts. It is not at all difficult to make a good solder connection that will provide the required electrical bond if you will simply observe a few basic rules for good soldering.

1. Use only good quality, resin-core solder made specifically for radio and television use; a good composition is 60 per cent tin and 40 per cent lead (usually indicated as 60/40). Acid core solder or paste flux must NOT, under any circumstances, be used, as the corrosive effects of these materials will cause much damage to the circuit components.

CAUTION

THE USE OF ACID CORE SOLDER OR PASTE FLUX ON THIS KIT OR ANY PORTION THEREOF AUTOMATICALLY VOIDS OUR WARRANTY COVERAGE.

2. Use a good soldering iron, 35-75 watts. The tip of the iron must be kept clean and well tinned, in accordance with the instructions of the soldering iron manufacturer, to obtain consistently good connections. The tip should present a bright appearance and be free of excess solder. An old rag or a pad of steel wool may be used to wipe the hot tip clean occasionally during use.
3. Be sure leads and terminals to be joined are clean and free of wax or corrosion before soldering. The solder will not adhere properly to the joint if the leads and terminals are dirty or corroded. This will usually result in a "cold" or high resistance connection.
4. A good mechanical connection should always be made before soldering, by crimping the leads on the terminals with your pliers. Do not rely on solder alone for physical strength. Stranded hookup wire should always be tinned with solder before being connected.
5. To solder properly, apply the iron to the joint for a few seconds; then apply the solder and hold the iron on the connection until the solder flows freely. The solder must flow completely over the connection. Simply melting drops of solder onto the connection will not produce the desired results, but will result in a "cold" solder connection. This presents a dull and pitted or "grainy" appearance. A good connection will have a smooth and shiny appearance. Remember, the joint itself must be heated sufficiently to melt solder before the solder will flow smoothly and freely in and around the connection; however, you must be careful not to apply heat too long. Excessive heat from the iron may damage components and insulation on wires connected to the joint. When soldering a joint having a small component connected to it (a 1/2 watt resistor, for example) the component may be protected from excessive heat from the iron by grasping the lead between the joint and the component with long-nose pliers. The pliers will then conduct most of the heat away from the component, preventing overheating. Do not use too much solder when making a connection. Use only enough to completely cover all leads and to fill lug or terminal holes. Excessive use of solder may result in the formation of solder "bridges" or shorts between adjacent terminals or nearby wiring, particularly on tube sockets and switch terminals. Also, solder may flow into the switch contacts, destroying switch action.

STEP-BY-STEP INSTRUCTIONS

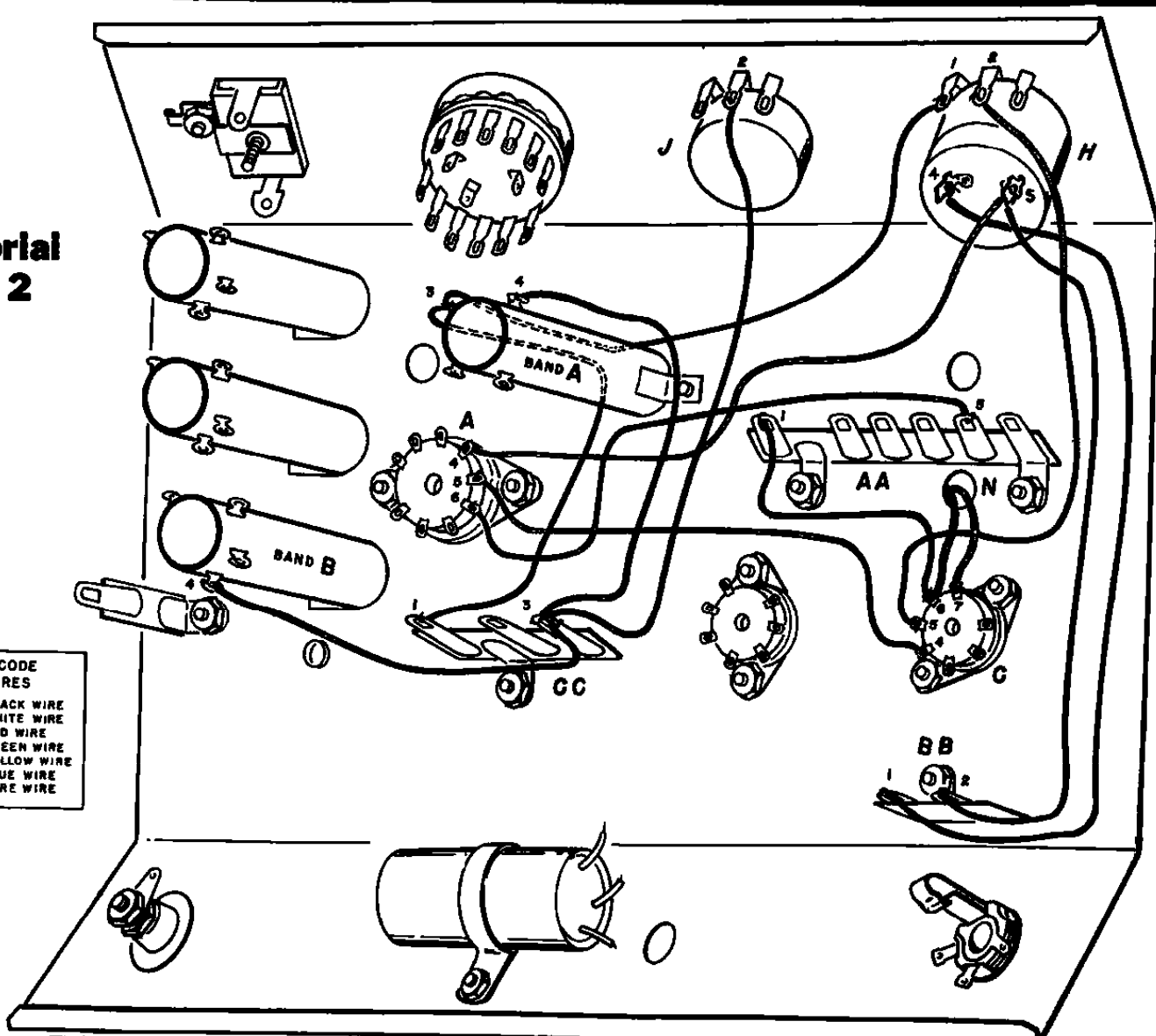
Each instructional step should be read and thoroughly understood before it is performed. In this way, errors will be avoided.

Check off each step in the check space () provided. In this way you will avoid omitting any steps. After each step cross out on the wiring pictorials the wire or component installed. Use a colored pencil.

The instructions tell you when to solder and when not to solder a connection. When you see "No Solder" (NS) after or during a step, simply wrap or "crimp" the lead to the terminal and proceed to the next step. When all leads have been connected to this terminal, a solder designation (S) will follow.

Pictorial No. 2

COLOR CODE FOR WIRES	
	BLACK WIRE
	WHITE WIRE
	RED WIRE
	GREEN WIRE
	YELLOW WIRE
	BLUE WIRE
	BARE WIRE



CAUTION

WIRING WITH ACID CORE SOLDER OR PASTE FLUX AUTOMATICALLY VOIDS THE WARRANTY. KITS AND/OR PARTS RETURNED FOR REPAIR, SERVICE, OR REPLACEMENT WILL BE RETURNED TO YOU AS RECEIVED, AT YOUR EXPENSE.

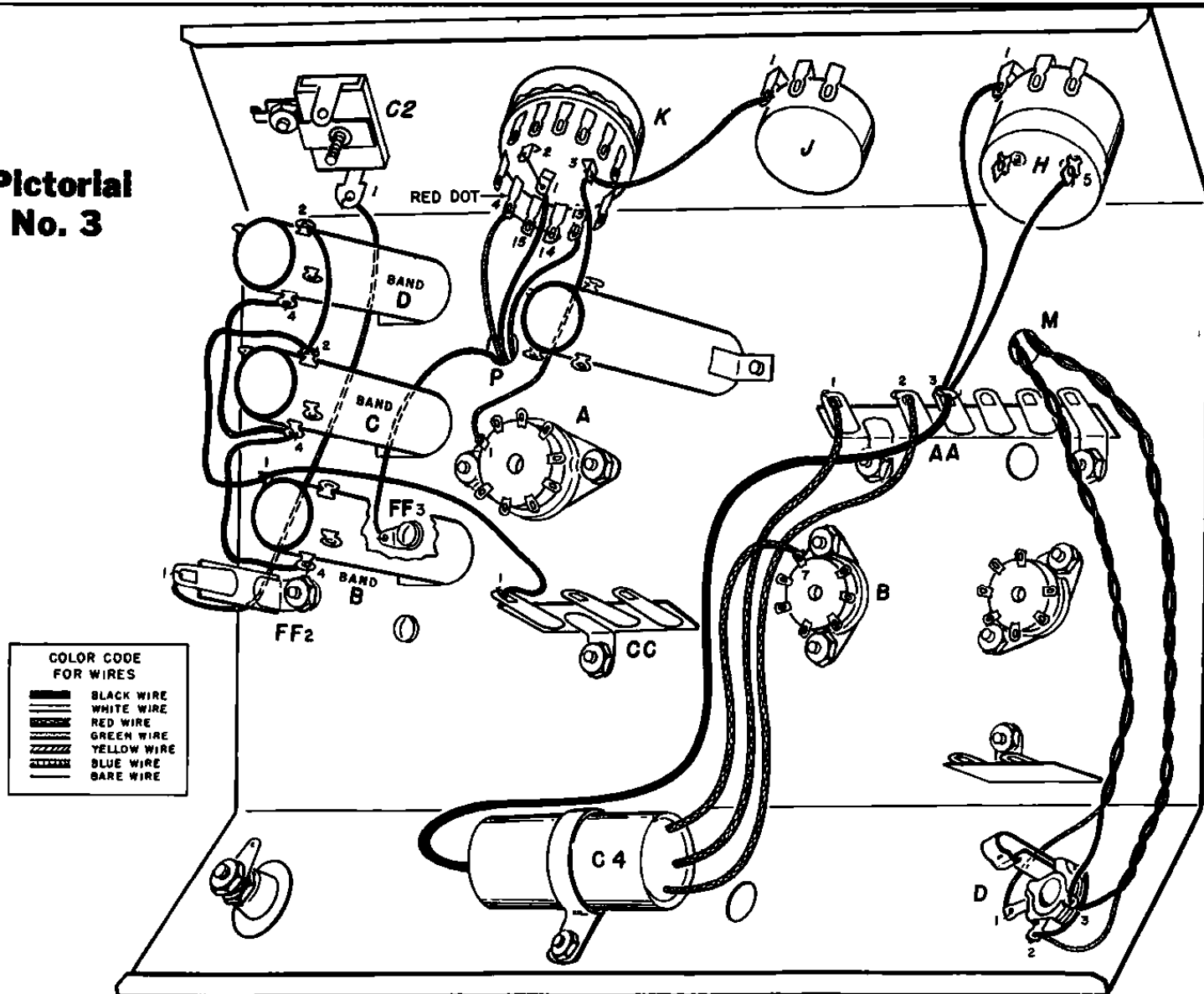
Observe Pictorial 2 which illustrates the following wiring steps.

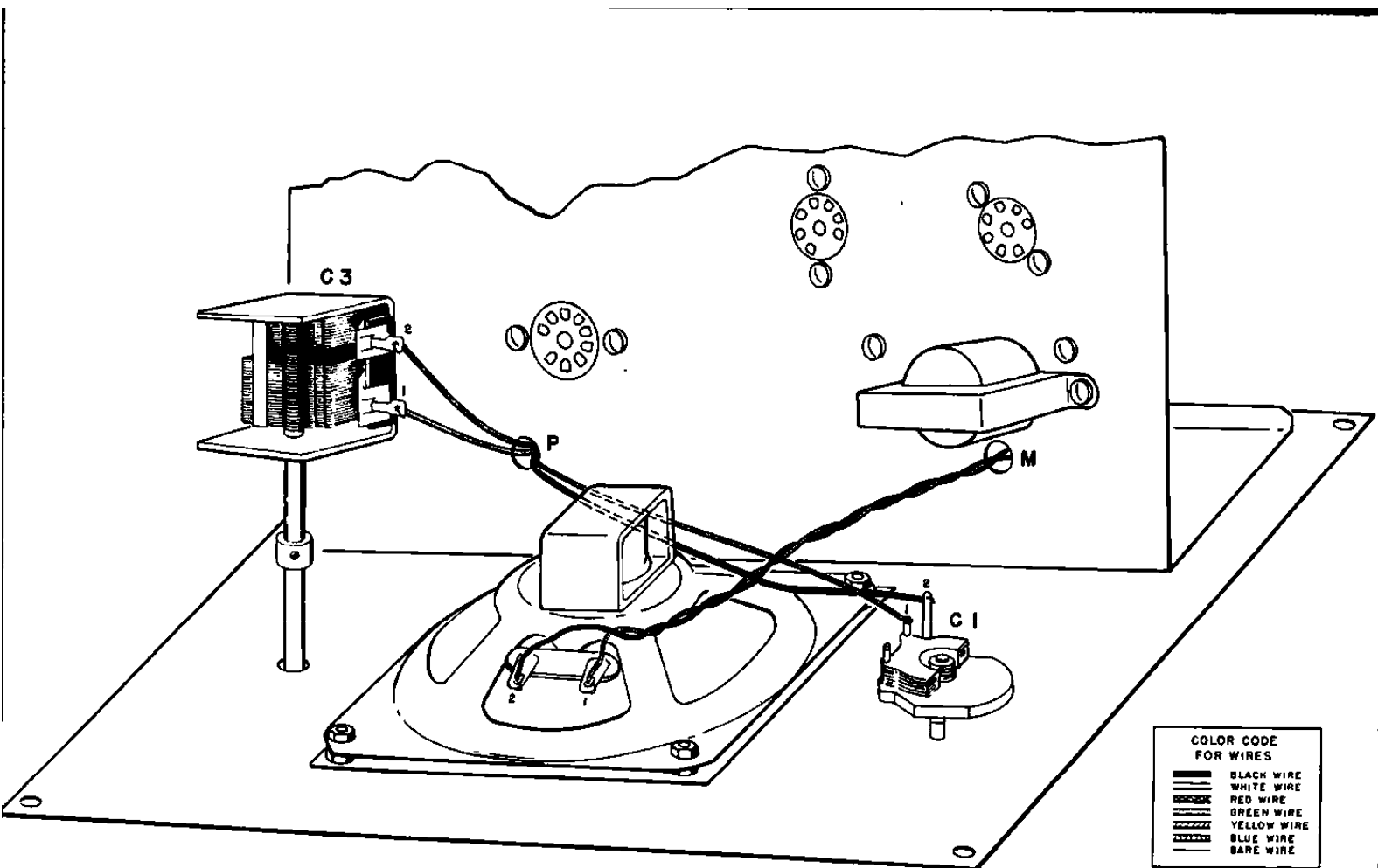
23. () Connect a 5" length of yellow wire from pin 5 of socket A (S) to pin 4 of socket C (S).
24. () Connect a 6" length of yellow wire from pin 4 of socket A (S) to lug 5 on control H (NS).
25. () Connect a 6" length of black wire from lug 5 on control H (NS) to lug 2 on terminal post BB (NS).
26. () Connect a 7" length of black wire from lug 1 on terminal post BB (NS) to lug 4 on control H (S).
27. () Connect a 4" length of green wire from pin 5 of socket C (S) to lug 2 on control H (S).
28. () Connect a 6" length of blue wire from lug 5 on terminal post AA (NS) to pin 6 of socket A (NS).
29. () Connect a 3 3/4" length of red wire from lug 1 on terminal post AA (NS) to pin 6 of socket C (NS).
30. () Cut the red lead on transformer T1 to 1 1/4" length and connect to pin 6 of socket C (NS).
31. () Cut the blue lead on transformer T1 to 1 1/4" length and connect to pin 7 of socket C (NS).
32. () Connect a 4 3/4" length of red wire from lug 4 on "Band A" coil (S) to lug 3 on terminal post CC (NS).
33. () Connect a 5 1/2" length of red wire from lug 2 on control J (NS) to lug 3 on terminal strip CC (NS).
34. () Connect a 4 1/2" length of red wire from lug 3 on terminal strip CC (NS) to lug 4 on "Band B" coil (NS).
35. () Connect a 5" length of black wire from lug 3 on the "Band A" coil (NS) to lug 1 on terminal strip CC (NS).
36. () Connect a 6 1/2" length of black wire from lug 3 on the "Band A" coil (S) to lug 1 on control H (NS).

Now observe Pictorial 3, which illustrates the following connections:

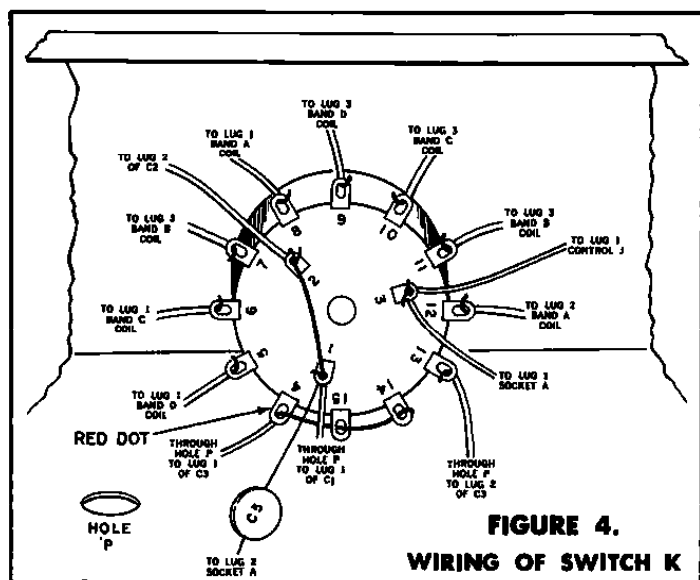
37. () Twist the black and yellow leads of the transformer T1, which run through chassis hole M, and cut to 5 1/2" length. Connect the black lead to lug 3 on the headphone jack D (NS), and the yellow lead to lug 1 on jack D (S).
38. () Connect a 3" length of red wire from lug 4 on "Band B" coil (S) to lug 4 on "Band C" coil (NS).
39. () Connect a 2 1/2" length of red wire from lug 4 on "Band C" coil (S) to lug 4 on "Band D" coil (S).
40. () Connect a 3 3/4" length of black wire from lug 1 on "Band B" coil (NS) to lug 1 on terminal post CC (NS).
41. () Connect a 4" length of black wire from lug 1 on "Band B" coil (NS) to lug 2 on "Band C" coil (NS).
42. () Connect a 1 1/2" length of black wire from lug 2 on "Band C" coil (S) to lug 2 on "Band D" coil (S).
43. () Connect a 3 3/4" length of black wire from lug 1 on control H (S) to lug 3 on terminal post AA (NS).
44. () Connect a 1 1/2" length of black wire from lug 5 on control H (S) to lug 3 on terminal post AA (NS).
45. () Cut one of the red leads of the 30-30-30 μ f 150V electrolytic capacitor C4 to 4 1/2" length, and connect to lug 2 on terminal post AA (NS).
46. () Connect the black lead from C4 to lug 3 on terminal post AA (NS).
47. () Cut one of the other red leads of C4 to 4" length, and connect to lug 1 on terminal post AA (NS).
48. () Cut the remaining red lead of C4 to 2 3/4" length, and connect to pin 7 of socket B (NS).
49. () Cut a 14" length of green and a 14" length of black wire. Twist the wires together to form a twisted pair. Connect one end of the green wire to headphone jack D, lug 2 (S). Connect the adjacent end of the black wire to jack D, lug 3 (S). Feed the twisted pair through hole M and leave the other ends temporarily disconnected.
50. () Connect a 4 1/2" length of green wire from lug 1 on terminal post FF2 (NS) to lug 1 on antenna tuning capacitor C2 (S).
51. () Cut a 7" length of green wire. Remove 1" of insulation from one end and 1/4" from the other. Feed the wire through hole P from the top of the chassis, with the 1" stripped end going underneath the chassis. Run this end through switch K lug 1 (NS), and connect it to switch K lug 2 (NS), as shown in Figure 4. Leave the end above the chassis temporarily disconnected.

Pictorial No. 3





Pictorial No. 4



52. () Remove 1" of insulation from one end of a green wire 4 1/2" long. Strip 1/4" of insulation from the other end. Feed the wire through hole P from the top of the chassis, with the 1" stripped end going underneath the chassis. Run this end through switch K, lug 4 (NS), through switch K, lug 15 (NS), and connect it to switch K, lug 14 (S). Then solder lugs 4 (S) and 15 (S). Leave the end above the chassis temporarily disconnected.
53. () Feed one end of a 5" blue wire through hole P from the top of the chassis. Connect the end underneath the chassis to switch K, lug 13 (S). Leave the other end temporarily disconnected.
54. () Cut a 5" length of blue wire, and connect one end to lug 13 on switch K (S). Feed the other end of the wire through the chassis hole P, and leave temporarily disconnected.
55. () Cut a 9" length of black wire and connect one end to the ground lug at FF3 (NS). Feed the other end of the wire through the chassis hole P as shown in Pictorial 3. Leave the other end temporarily disconnected.
56. () Connect a 2 1/2" length of blue wire from lug 1 and control J (S) to lug 3 on switch K (NS).
57. () Connect a 2 3/4" length of blue wire from pin 1 of socket A (S) to lug 3 on switch K (S).

Page 12

Now observe Pictorial 4 which illustrates the following connections:

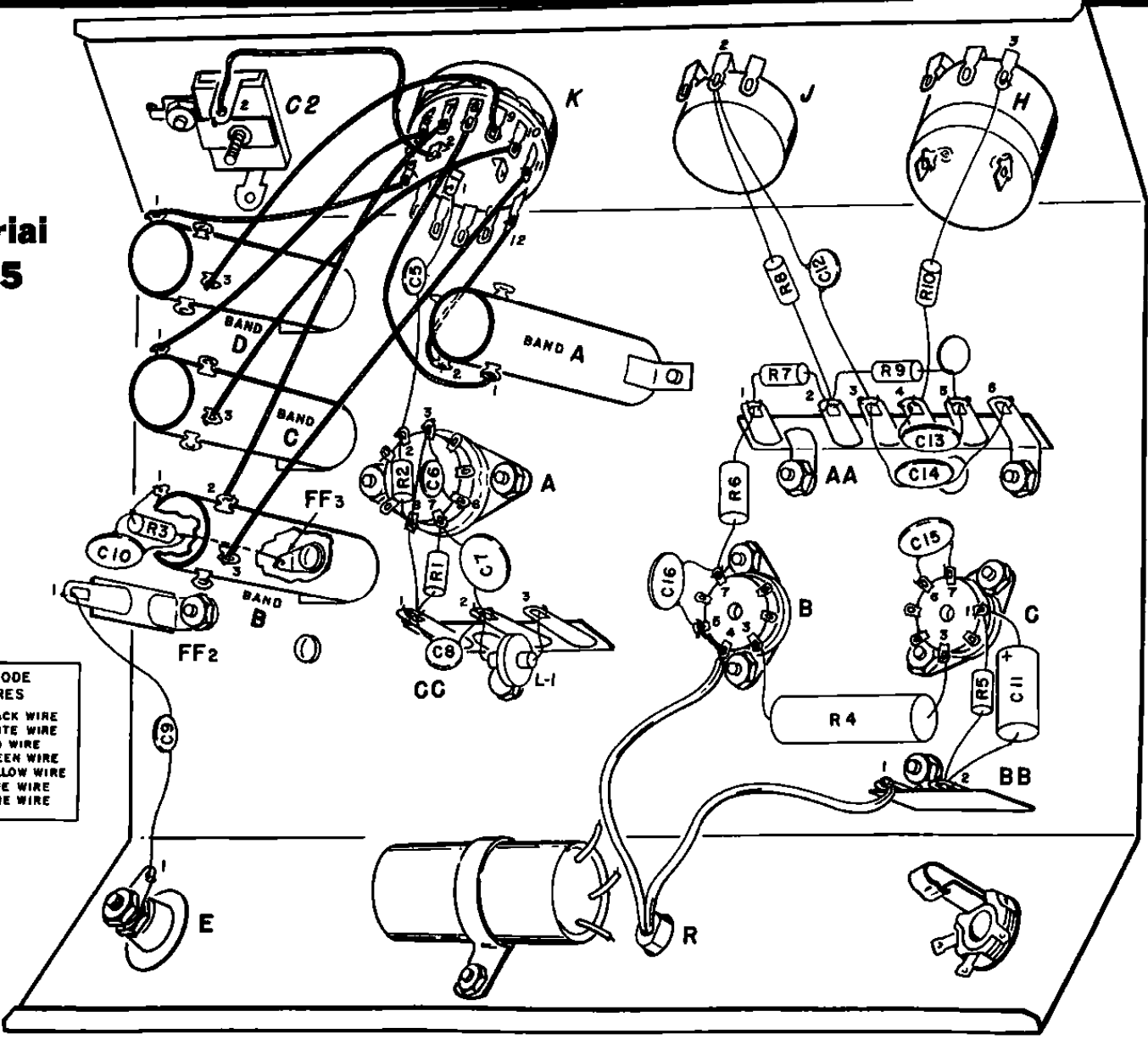
58. () Connect the free end of the 7" green wire that was connected to lug 1 and 2 on switch K in step 51, to lug 1 on C1 (S).
59. () Connect the free end of the black wire that was connected to the ground lug at FF3 in step 55 in lug 2 on C1 (S).
60. () Connect the free end of the 4 1/2" green wire that was connected to lugs 4, 15, and 14 on switch K in step 52 to lug 1 on C3 (S).
61. () Connect the free end of the 5" blue wire that was connected to lug 13 on switch K in step 53 to lug 2 on C3 (S).
62. () Connect the green wire of the twisted pair that was connected to the headphone jack D lugs 1 and 2, to lug 1 on the loudspeaker (S). Connect the adjacent black wire to lug 2 on the loudspeaker (S).

Now observe Pictorial 5 which illustrates the following connections:

63. () Cut each lead of the 100 μ fd ceramic disc capacitor C5 (part #12-3) to 3/4" length, and connect from lug 1 on switch K (S) to pin 2 of socket A (NS).
 64. () Run a 3" length of bare wire through lug 1 on terminal strip CC and then through pin 8 of socket A (NS), and connect the wire to pin 3 on the socket A (NS). Then connect to lug 1 on terminal post CC (NS).
 65. () Cut each lead of a 1 megohm 1/2 w resistor R1 (brown-black-green-silver) (part #13-5) to 1/2" length, and connect from pin 7 of socket A (NS) to lug 1 on terminal post CC (NS).
 66. () Cut each lead of a 2.2 megohm 1/2 w resistor R2 (red-red-green-silver) (part #13-3) to 1/2" length, and connect from pin 2 of socket A (S) to pin 8 of socket A (S).
 67. () Cut each lead of the 470 μ fd ceramic disc capacitor C6 (part #12-22) to 3/4" length, and connect from pin 3 of socket A (S) to pin 6 of socket A (S).
- Observe Figure 4 as well as Pictorial 5 when wiring switch K.
68. () Connect a 4" length of yellow wire from lug 2 on the capacitor C2 (S) to lug 2 on switch K (S).
 69. () Connect a 1 3/4" length of green wire from lug 5 on switch K (S) to lug 1 on the "Band D" coil (S).
 70. () Connect a 1 3/4" length of green wire from lug 6 on switch K (S) to lug 1 on the "Band C" coil (S).
 71. () Connect a 2 1/4" length of green wire from lug 7 on switch K (S) to lug 2 on the "Band B" coil (S).
 72. () Connect a 2 1/4" length of green wire from lug 8 of switch K (S) to lug 1 on the "Band A" coil (S).

Pictorial No. 5

COLOR CODE FOR WIRES	
	BLACK WIRE
	WHITE WIRE
	RED WIRE
	GREEN WIRE
	YELLOW WIRE
	BLUE WIRE
	BARE WIRE



73. () Connect a 1" length of blue wire from lug 12 on switch K (S) to lug 2 on the "Band A" coil (S).
74. () Connect a 1 1/2" length of blue wire from lug 3 on the "Band D" coil (S) to lug 9 on switch K (S).
75. () Cut each lead of a 0.01 μ f ceramic disc capacitor C7 (part # 12-8) to 1/2" length, and connect from pin 7 of socket A (S) to lug 2 on terminal post CC (NS).
76. () Connect a 2" length of blue wire from lug 3 on the "Band C" coil (S) to lug 10 on switch K (S).
77. () Cut each lead of the 390 μ f ceramic disc capacitor C8 (part # 12-60) to 1/2" length, and connect from lug 1 on terminal post CC (S) to lug 2 on terminal post CC (NS).
78. () Cut each lead of the R-F choke L-1 (part # 23-9) to 3/4" length, and connect from lug 2 on terminal post CC (S) to lug 3 on terminal post CC (S).
79. () Cut each lead of the 270 μ f ceramic disc capacitor C9 (part # 12-31) to 1" length, and connect from lug 1 on the antenna post E (S) to lug 1 on terminal post FF2 (S).
80. () Cut each lead of a 0.01 μ f ceramic disc capacitor C10 (part # 12-8) to 1/2" length, and wrap around the leads of a 100K 1/2 w resistor, R3 (brown-black-yellow-silver) (part # 13-1), as shown in Figure 5. Solder these connections as shown.

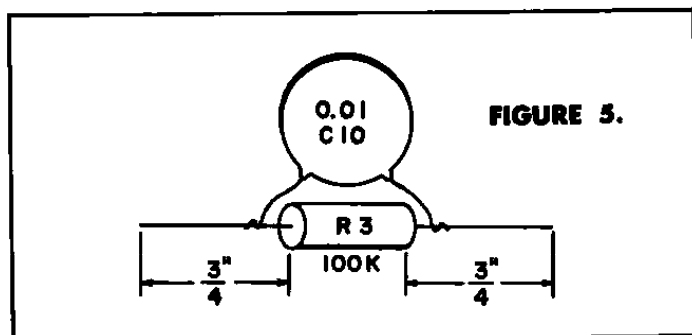
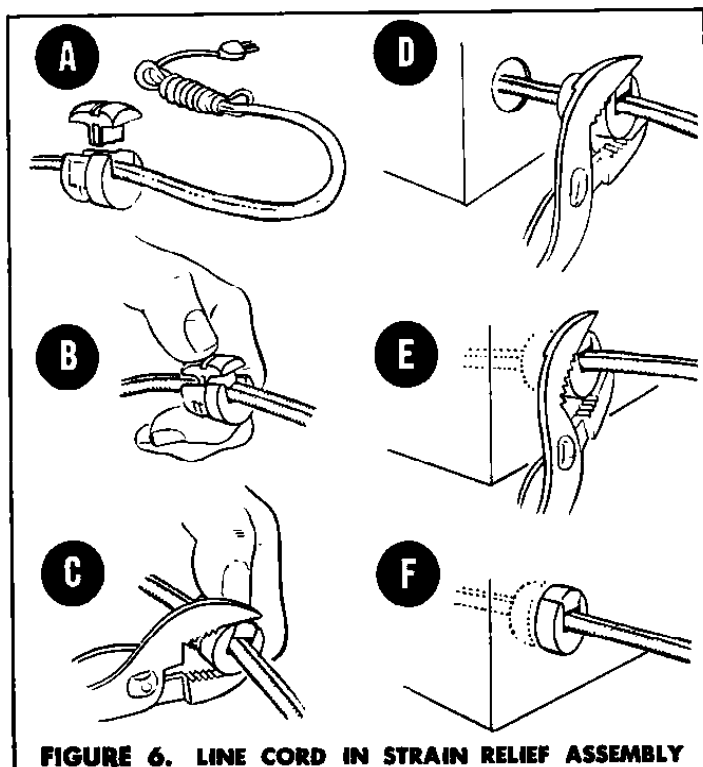


FIGURE 5.

81. () Connect a 3" length of blue wire from lug 11 on switch K (S) to lug 3 on the "Band B" coil (S).
82. () Cut the leads of the resistor-capacitor combination soldered together in step 80 to the lengths shown in Figure 5, and connect from lug 1 on the "Band B" coil (S) to the ground lug FF3 (S).
83. () Cut each lead of the 200 ohm 10 w resistor R4 (part # 13-83) to 1" length, and connect from pin 3 of socket C (S) to pin 3 of socket B (S).

84. () Cut each lead of the 10 μ f 25-Volt electrolytic capacitor C11 (part # 12-41) to 3/4" length, and connect the negative end to lug 2 on terminal post BB (NS). Connect the + or positive end to pin 1 of socket C (NS).
85. () Cut each lead of the 180 ohm 1/2 w resistor R5 (brown-grey-brown-silver) (part # 13-34) to 3/4" length, and connect from lug 2 on terminal post BB (S) to pin 1 of socket C (S).
86. () Cut each lead of the 270 ohm 1 w resistor R6 (red-violet-brown-silver) (part # 13-82) to 1/2" length, and connect from pin 7 of socket B (NS) to lug 1 on terminal post AA (NS).
87. () Cut each lead of the 4700 ohm 1/2 w resistor R7 (yellow-violet-red-silver) (part # 13-18) to 3/4" length, and connect from lug 1 on terminal post AA (S) to lug 2 on terminal post AA (NS).
88. () Cut each lead of the 47,000 ohm 1/2 w resistor R8 (yellow-violet-orange-silver) (part # 13-4) to 1" length, and connect from lug 2 on control J (NS) to lug 2 on terminal post AA (NS).
89. () Cut each lead of the 100 K 1/2 w resistor R9 (brown-black-yellow-silver) (part # 13-1) to 3/4" length, and connect from lug 2 on terminal post AA (S) to lug 5 on terminal post AA (NS).
90. () Cut each lead of the 750 μ f ceramic disc capacitor C12 (part # 12-61) to 1" length, and connect from lug 2 on control J (S) to lug 3 on terminal post AA (NS).
91. () Cut each lead of the 27,000 ohm 1/2 w resistor R10 (red-violet-orange-silver) (part # 13-33) to 1" length, and connect from lug 3 on control H (S) to lug 4 on terminal post AA (NS).
92. () Cut each lead of a 0.01 μ f ceramic disc capacitor C13 (part # 12-8) to 1/2" length, and connect from lug 4 on terminal post AA (S) to lug 5 on terminal post AA (S).
93. () Cut each lead of a 0.01 μ f ceramic disc capacitor C14 (part # 12-8) to 3/4" length, and connect from lug 3 on terminal post AA (S) to lug 6 on terminal post AA (S).
94. () Cut each lead of the 0.005 μ f ceramic disc capacitor C15 (part # 12-36) to 1/2" length, and connect from pin 6 of socket C (S) to pin 7 of socket C (S).
95. () Insert the line cord into the two-piece strain relief (part # 20-3) as shown in Figure 6, a,b,c. Allow the stripped end to project 3" beyond the strain relief. Feed the stripped end through the chassis hole R, and insert the strain relief as shown in Figure 6, d,e,f. Connect one stripped end to lug 7 on the terminal post BB (S); run the other stripped end through pin 4 on socket B and connect to pin 5 of socket B (NS). Solder pin 4 (S).
96. () Cut the leads of the 0.01 μ f ceramic disc capacitor C16 (part # 12-8) to 1/2" length, and connect from pin 5 of socket B (S) to pin 7 of socket B (S).



This completes the wiring; check now to see that all connections are properly soldered.

97. () Insert the 50C5 tube into socket C. Refer to Figure 7; do not force the tube into the socket, as it may be inserted easily when properly oriented.
98. () Similarly, insert the 35W4 tube into socket B.
99. () Similarly, insert the 12AT7 tube into socket A.
100. () Turn the VOLUME CONTROL shaft fully counter-clockwise until a click is heard. Mount one of the small knobs (port #18-21) on the control with the white indicating line pointing towards the designation OFF. Tighten the set screw.
101. () Turn the REGENERATION CONTROL shaft fully counter-clockwise. Mount another small knob with the white indicating line pointing towards the first letter "R" in the designation REGENERATION. Tighten the set screw.

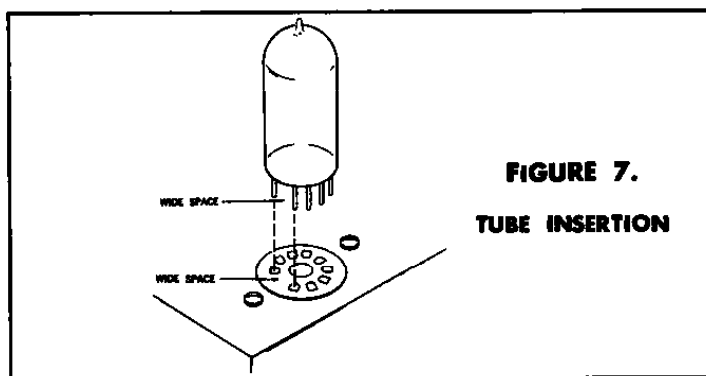
102. () Mount another small knob on the BANDSWITCH. In the extreme counter-clockwise position of the switch the white indicating line of the knob should point towards the designation "A" on the front panel. Tighten the set screw.
 103. () Turn the shaft of the ANTENNA TUNING capacitor clockwise until a resistance is felt. Then mount the last small knob with the white indicating line pointing straight up. Tighten the set screw.
 104. () Turn the shaft of the MAIN TUNING capacitor counter-clockwise until the plates are fully closed. Then mount one of the large knobs (port #18-20) with the plastic pointer in a horizontal position pointing to the left side of the scale.
 105. () Turn the shaft of the BANDSPREAD control until the plates of the capacitor are fully open (unmeshed). Mount the other large knob with the plastic pointer towards "O" on the lagging scale. Tighten the set screw.
- As a final visual check, compare your completed unit with the photographs on the rear cover of the instruction manual.

PRELIMINARY CHECKS

The construction of your KT-135 is now completed. Check over the unit carefully before proceeding to the next step. If possible, try to have a friend check the construction for you as a person tends to repeat the same errors.

If an ohmmeter is available, the following resistance checks should be made before plugging the receiver into the line:

A cold DC resistance of 300 ohms between the prongs of the line plug with the switch in the ON position; a DC resistance of at least 100,000 ohms between lugs 2 and 3 of terminal strip AA; approximately the same resistance should be measured between lugs 1 and 3. When making this measurement be sure to allow sufficient time for the capacitor to be charged by the ohmmeter battery. If any discrepancy exists, do not plug in the unit until the cause has been determined and the error corrected.



CAUTION

NEVER TOUCH ANY OF THE WIRES UNDERNEATH THE CHASSIS WHILE THIS UNIT IS PLUGGED IN. NEVER PLACE THIS RECEIVER ON ANY GROUNDED METAL SURFACE WHILE OPERATING OR TESTING IT. SERIOUS INJURY MAY RESULT IF THIS PRECAUTIONARY NOTE IS IGNORED.

OPERATING INSTRUCTIONS

Hook a 25 to 50 foot antenna to the antenna post at the rear of the chassis. See Figure 8 and section on antenna installation on this page. Plug the receiver into a 105-125 volt AC or DC outlet. Turn the BANDSWITCH to the band A (broadcast band) position. Turn the REGENERATION control $\frac{3}{4}$ of the way towards maximum ("3 o'clock" position). Turn the ANTENNA TUNING control approximately two complete turns in a counter-clockwise direction. The exact setting of this control depends on the length of the antenna; some experimenting will be required in order to obtain the optimum results.

Turn the VOLUME CONTROL-ON-OFF switch to about its mid position. Allow about a minute for the receiver to warm up. Rotate the MAIN TUNING control throughout its range. You should hear several loud squeals through the speaker, indicating stations being received. Note that if the KT-135 is being operated on DC, it may be necessary to reverse the line plug in order to obtain these squeals. If the TUNING CONTROL is rotated very slowly, you will notice that the sound of the squeal or whistle changes, starting at a high pitch, dropping lower, and lower until you hear no sound, and again rising as you pass through the zero point.

Tune in one of the signals, adjusting the MAIN TUNING control so that the squeal is at a low pitch or at the zero point. Now reduce the setting of the REGENERATION CONTROL (turn in a counter-clockwise direction) until the squeal stops. Re-adjust the MAIN TUNING control after adjusting the REGENERATION control. You may find that you hear more than one station after this is done; in this case, turn the ANTENNA TUNING control counter-clockwise until the interfering signal is reduced to a minimum. It may now be necessary to re-tune the MAIN TUNING control for best results. On weak signals, turn the ANTENNA TUNING control clockwise until the best sensitivity is found. Adjusting the BANDSPREAD control will give sharper tuning, as this control has the effect of spreading out a small portion of the band selected by the MAIN TUNING control. The BANDSPREAD control is particularly useful on the short wave bands (bands B, C, and D), where stations may be very close together; greater care in tuning will be required on these bands for best results. Note that the MAIN TUNING scale has a dot at 4 MC on Band B, and dots at 7 and 14 MC on Band C. These points correspond to very active sections of the frequency band; by setting the MAIN TUNING control at these calibration marks, the BANDSPREAD control permits a frequency coverage of from 3.5 to 4 MC, 7 to 7.3 MC, and 12.5 to 14.4 MC respectively. If you prefer to use headphones rather than the loudspeaker, simply plug a set of phones into the jack at the rear of the chassis; this automatically disconnects the loudspeaker. In either case, use the volume control to adjust the sound to the desired level.

Page 16

A chart has been supplied listing the operating frequency and best time for listening of several short-wave stations broadcasting in the English language. NOTE:

$$(1 \text{ MC} = 1000 \text{ KC}) \quad \text{WAVELENGTHS IN METERS} = \frac{300}{f(\text{in MC})} = \frac{300,000}{f(\text{in KC})}$$

(MC = Megacycles per second; KC = Kilocycles per second)
(See pages 17 and 18)

ANTENNA INSTALLATION

Although a few feet of wire will probably act as a satisfactory antenna for the broadcast band, an outdoor antenna will be necessary for good short wave reception. This antenna should be installed as shown in Figure 7, and should be located at as great a height above the ground as possible. The lead-in wire should be run away from any metal objects or electrical appliances to minimize interference. DO NOT GROUND THE KT-135 RECEIVER CHASSIS.

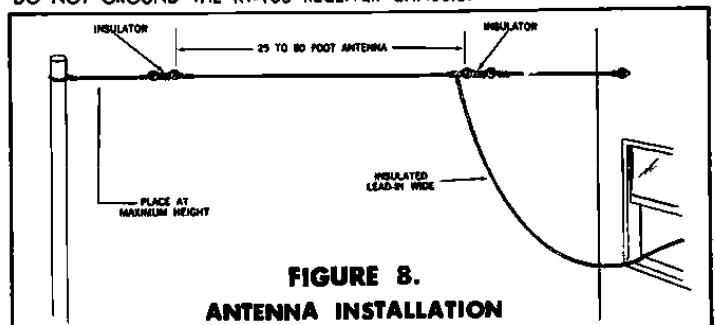


FIGURE 8.
ANTENNA INSTALLATION

VOLTAGE CHART

All measurements made with a voltmeter, from lug 1 of terminal post CC to the point indicated. VOLUME CONTROL set in minimum position (just turned on), REGENERATION CONTROL and MAIN TUNING CONTROL fully counter-clockwise, antenna disconnected. Voltages measured with 117 volt 60 cps AC line voltage applied.

TUBE	PIN NUMBER								
	1	2	3	4	5	6	7	8	9
12AT7 Socket A	56 VDC	-0.4 VDC	0 V	0 V	12.6 VAC	44 VDC	-0.4 VDC	6 V	NC *
35W4 Socket B	NC *	NC *	90 VAC **	117 VAC **	117 VAC **	NC *	135 VDC	—	—
50C5 Socket C	8.0 VDC	NC *	62 VAC **	12.6 VAC **	D V	125 VDC	115 VDC	—	—

* NC = NO CONNECTION, DO NOT MEASURE

** AC VOLTAGES measured with a 1,000 ohms per volt meter
DC VOLTAGES measured with a 20,000 ohms per volt meter

Listen to the Voices of the World

ENGLISH LANGUAGE SHORT-WAVE BROADCAST STATIONS BEST HEARD IN WESTERN NORTH AMERICA

Readers in the western part of the United States and Canada will find the following list of "Best Heard" stations helpful in tuning the short-wave broadcast bands. The left-hand column lists the hour in Pacific Standard Time for broadcasts in English only, in the middle column, the city and country from which the broadcasts originate are listed with the name the station uses for identification in parentheses; and on the right are the frequencies and call letters for stations using them during their broadcasts.

TIME (PST)	CITY, COUNTRY (NAME)	FREQUENCIES (kc.)
6:00-8:00 a.m.	Manila, Philippines (<i>The Call of the Orient</i>)	11855, 1730
6:30-7:30 a.m.	Djakarta, Indonesia (<i>The Voice of Indonesia</i>)	9710, 4910
7:15-8:15 a.m.	Melbourne, Australia (<i>Radio Australia</i>)	11770 (VLC11)
8:00-8:15 a.m.	Stockholm, Sweden (<i>Radio Sweden</i>)	15155
10:00-1:00 p.m.	London, England (<i>North American Service</i>)	17700
1:00-2:15 p.m.	London, England (<i>General Overseas Service</i>)	17700, 15310
2:15-3:15 p.m.	London, England (<i>General Overseas Service</i>)	15310, 11830
3:00-3:30 p.m.	Tokyo, Japan (<i>Radio Japan</i>)	17825 (JOA22)
		15235 (JOB9)
3:00-7:00 p.m.	London, England (<i>General Overseas Service</i>)	11830, 9825
3:00-10:00 p.m.	Moscow, USSR (<i>Radio Moscow</i>)	17865, 15140
4:30-4:50 p.m.	Tokyo, Japan (<i>Radio Japan</i>)	15235 (JOB9)
		11706 (JOA4)
4:55-5:45 p.m.	Montreal, Canada (<i>Radio Canada</i>)	15190 (CKCX)
		11720 (CHOL)
5:00-7:30 p.m.	Cape Haitien, Haiti (<i>The Evangelistic Voice</i>) - no broadcast on Wednesday and Thursday	15400, 9866
5:30-7:15 p.m.	Berne, Switzerland (<i>Switzerland Calling</i>)	11861 (HER5)
		9825 (HER4)
		6165 (HER3)
6:00-9:00 p.m.	Quito, Ecuador (HCJB - <i>The Voice of the Andes</i>) - no broadcast on Monday	15115, 11915, 9745
6:25-6:45 p.m.	Rome, Italy (<i>Italian Broadcasting & TV System</i>)	9575, 6610
6:30-6:40 p.m.	Cologne, Germany (<i>The Voice of Germany</i>)	11795, 9840
6:30-7:00 p.m.	Warsaw, Poland (<i>Radio Warsaw</i>)	9825, 6025
6:30-7:10 p.m.	Hilversum, Holland (<i>Radio Netherlands</i>)	11950, 9580
6:30-8:00 p.m.	Hilversum, Holland (<i>The Happy Station</i>) - special program on Sundays only	11950, 9580
6:45-7:00 p.m.	Brazzaville, FEA (<i>Radio Brazzaville, French Equatorial Africa</i>)	11970, 9825
6:55-7:35 p.m.	Montreal, Canada (<i>Radio Canada</i>)	11845 (CKNK1)
		9806 (CKLP)
7:00-7:30 p.m.	Bucharest, Romania (<i>Bucharest Calling</i>)	11937, 6070
7:00-7:30 p.m.	Peking, China (<i>Radio Peking</i>)	17745, 17720
		15360, 15118
7:00-8:30 p.m.	Prague, Czechoslovakia (<i>Radio Prague</i>)	9656, 6170
		6106, 6055
7:00-8:45 p.m.	Guatemala City, Guatemala (TGNA)	9868, 6052
7:15-8:00 p.m.	Madrid, Spain (<i>The Voice of Spain</i>)	9866, 6120
7:30-8:00 p.m.	Copenhagen, Denmark (<i>The Voice of Denmark</i>) - no English on Sundays	9630 (OZF)
7:30-8:00 p.m.	Tokyo, Japan (<i>Radio Japan</i>)	15235 (JOB9)
		11706 (JOA4)
8:00-8:30 p.m.	Oslo, Norway (<i>Radio Norway</i>) - on Sundays only	15175, 11735, 9540
8:00-8:30 p.m.	Budapest, Hungary (<i>Radio Budapest</i>)	12010, 9825
8:00-8:30 p.m.	Sofia, Bulgaria (<i>Sofia Calling</i>)	9700
8:00-9:00 p.m.	San Jose, Costa Rica (TIFC - <i>The Lighthouse of the Caribbean</i>)	9847, 6037
8:15-9:00 p.m.	Berne, Switzerland (<i>Switzerland Calling</i>)	11861 (HER5)
		9636 (HER4)
8:15-9:00 p.m.	Madrid, Spain (<i>The Voice of Spain</i>)	9560, 6120
8:30-9:00 p.m.	Bucharest, Romania (<i>Bucharest Calling</i>)	11937, 6070
9:00-9:30 p.m.	Taipei, Taiwan (<i>The Voice of Free China</i>)	15235, 11815
9:00-9:30 p.m.	Stockholm, Sweden (<i>Radio Sweden</i>)	9866
9:15-9:30 p.m.	Brazzaville, FEA (<i>Radio Brazzaville, French Equatorial Africa</i>)	11970
9:15-10:00 p.m.	Madrid, Spain (<i>The Voice of Spain</i>)	6380, 6120
9:30-10:00 p.m.	Warsaw, Poland (<i>Radio Warsaw</i>)	9825, 6025
10:30-11:00 p.m.	Taipei, Taiwan (<i>The Voice of Free China</i>)	15235, 11815

TIME (PST)	CITY, COUNTRY (NAME)	FREQUENCIES (kc.)
10:30-2:45 a.m.	Wellington, New Zealand (<i>Radio New Zealand</i>)	9540 (ZL2), 6080 (ZL7)
11:30-11:45 p.m.	Papeete, Tahiti (<i>The Voice of France in the Pacific</i>)	6135
12:00-1:15 a.m.	Manila, Philippines (<i>Call of the Orient</i>)	17806, 15300, 11855, 9730

NEWS BROADCASTS FOR WESTERN NORTH AMERICA

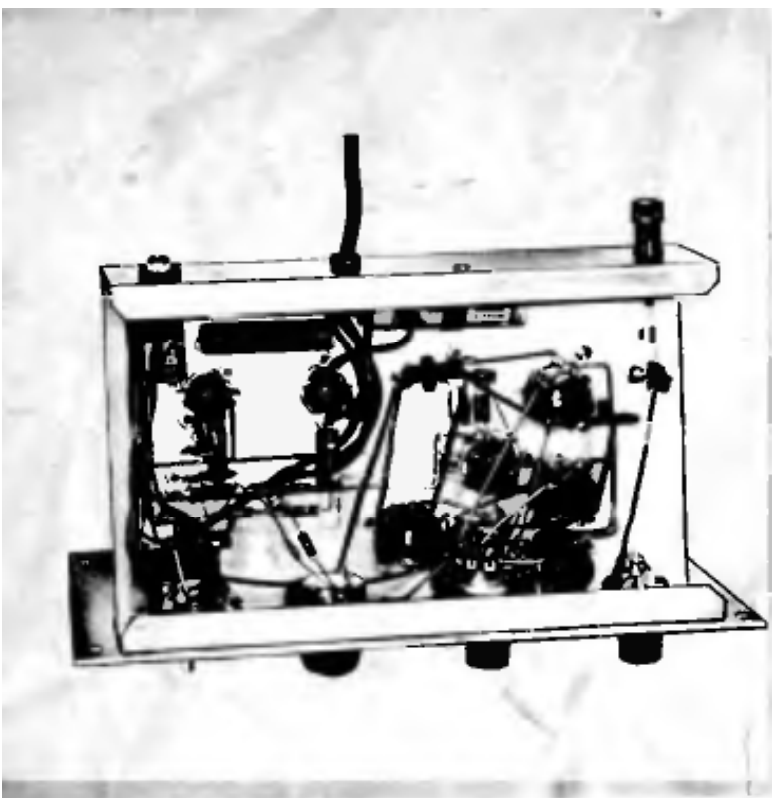
The following listing of news broadcasts has been prepared for those readers living in the Western United States and Canada. Times are given in Pacific Standard Time and the frequencies in kilocycles.

TIME (PST)	CITY AND COUNTRY	FREQUENCIES (kc.)
6:45 a.m.	Djakarta, Indonesia	9710, 4910
7:00 a.m.	Manila, Philippines	11855, 9730
7:30 a.m.	Melbourne, Australia	11770
8:00 a.m.	Stockholm, Sweden	15155
9:00 a.m.	London, England	17700
12:00 Noon	London, England	17700
3:00 p.m.	London, England	15310, 11930, 9825
3:00 p.m.	Tokyo, Japan	17825, 15235
3:00 p.m.	Moscow, USSR	17865, 15140
4:00 p.m.	Moscow, USSR	17865, 15140
4:30 p.m.	Delhi, India	17720, 15140
4:30 p.m.	Tokyo, Japan	15235, 11705
5:00 p.m.	Montreal, Canada	15170, 11720
5:00 p.m.	Moscow, USSR	17865, 15140
5:00 p.m.	Karachi, Pakistan	17750, 15335
5:30 p.m.	Montreal, Canada	15170, 11720
5:35 p.m.	Berne, Switzerland	11865, 9535, 6165
6:00 p.m.	London, England	11930, 9825
6:00 p.m.	Moscow, USSR	17865, 15140
6:25 p.m.	Rome, Italy	9575, 6010
6:30 p.m.	Cologne, Germany	11795, 9840
6:30 p.m.	Warsaw, Poland	9825, 6025
6:30 p.m.	Hilversum, Holland (not on Sunday)	11950, 9580
6:45 p.m.	Delhi, India	17820, 15140, 11710
6:45 p.m.	Brazzaville, French Equatorial Africa	11970, 9825
7:00 p.m.	Moscow, USSR	17865, 15140
7:00 p.m.	Montreal, Canada	11945, 9685
7:00 p.m.	Bucharest, Romania	11937, 6070
7:00 p.m.	Peking, China	17745, 17720, 15360, 15118
7:00 p.m.	Prague, Czechoslovakia	9656, 6170, 6105, 6025
7:15 p.m.	Madrid, Spain	9866, 6120
7:30 p.m.	Copenhagen, Denmark (only Mondays)	9520
7:30 p.m.	Tokyo, Japan	15235, 11705
8:00 p.m.	Moscow, USSR	17865, 15140
8:00 p.m.	Oslo, Norway (only Sundays)	15175, 11735, 9540
8:00 p.m.	Sofia, Bulgaria	9700
8:15 p.m.	Madrid, Spain	9360, 6120
8:20 p.m.	Berne, Switzerland	11865, 9535
8:30 p.m.	Bucharest, Romania	11937, 6070
9:00 p.m.	Taipei, Taiwan	15235, 11815
9:00 p.m.	Moscow, USSR	17865, 15140
9:00 p.m.	Stockholm, Sweden	9820
9:15 p.m.	Brazzaville, French Equatorial Africa	11970
9:15 p.m.	Madrid, Spain	9360, 6120
9:30 p.m.	Warsaw, Poland	9825, 6025
10:30 p.m.	Taipei, Taiwan	15235, 11815
11:30 p.m.	Wellington, New Zealand	9540, 6025
11:30 p.m.	Papeete, Tahiti	6135
12:30 a.m.	Wellington, New Zealand (not on Sunday)	9540, 6080
1:00 a.m.	Manila, Philippines	11855, 9730
2:30 a.m.	Wellington, New Zealand	9540, 6080

REPRINTED FROM POPULAR ELECTRONICS BY PERMISSION

ENGLISH LANGUAGE SHORT-WAVE BROADCAST STATIONS BEST HEARD IN EASTERN NORTH AMERICA

TIME (EST)	CITY COUNTRY (NAME)	FREQUENCIES (kc)	TIME (EST)	CITY AND COUNTRY	FREQUENCIES (kc)
6:00-6:30 a.m.	Warsaw, Poland (<i>Radio Warsaw</i>)	17000, 15120	5:30 a.m.	Wellington, New Zealand	9540, 6080
7:00-7:15 a.m.	Helsinki, Finland (<i>Finland Calling</i>) — no English on Sundays and holidays	17748, 15190	6:00 a.m.	Warsaw, Poland	17800, 15120
7:15-8:15 a.m.	Warsaw, Poland (<i>Radio Warsaw</i>)	17800, 15120	6:15 a.m.	Djakarta, Indonesia	9710
8:00-9:30 a.m.	Melbourne, Australia (<i>Radio Australia</i>)	11770, (VLA11)	7:00 a.m.	Helsinki, Finland	17798, 15190
9:15-9:45 a.m.	Cape Haitien, Haiti (<i>The Evangelistic Voice</i>) — no broadcast on Thursdays	15380 9638	7:15 a.m.	Warsaw, Poland	17800, 15120
10:00-12:15 p.m.	Stockholm, Sweden (<i>Radio Sweden</i>)	17000	7:45 a.m.	Melbourne, Australia	11770
1:00-4:00 p.m.	London, England (<i>North American Service</i>)	17700	8:15 a.m.	Warsaw, Poland	17800, 15120
4:00-5:15 p.m.	London, England (<i>General Overseas Service</i>)	17700	8:45 a.m.	Stockholm, Sweden	17840
4:15-4:45 p.m.	Hilversum, Holland (<i>Radio Netherlands</i>) — no English on Sundays	17700 15310 9008	8:45 a.m.	Melbourne, Australia	11770
4:30-5:20 p.m.	Jerusalem, Israel (<i>The Voice of Zion</i>)	15365 11950	12:00 Noon	Lisbon, Portugal	21495 17895
5:00-5:30 p.m.	Port-au-Prince, Haiti (<i>Radio Commerce</i>) — on Sundays only	9008	12:15 p.m.	London, England	21700
5:15-6:15 p.m.	London, England (<i>General Overseas Service</i>)	9482 (4VC)	12:30 p.m.	Lisbon, Portugal	21700 17895
6:00-6:30 p.m.	Tokyo, Japan (<i>Radio Japan</i>)	15310, 11980	1:00 p.m.	Athens, Greece	17775 15345
6:00-10:00 p.m.	London, England (<i>General Overseas Service</i>)	17825 (JOA22) 15235 (JOB9)	1:30 p.m.	London, England	17700
6:00-1:00 a.m.	Moscow, USSR (<i>Radio Moscow</i>)	11800 9825	3:15 p.m.	Tehran, Iran	15100
6:15-7:00 p.m.	Ankara, Turkey (<i>Radio Ankara</i>)	11837 11890 11845	3:30 p.m.	Damascus, Syria	17845
7:15-7:35 p.m.	Rome, Italy (<i>Italian Broadcasting and Television System</i>)	11825 11825 11740	4:15 p.m.	Hilversum, Holland	15345 11950
7:30-7:50 p.m.	Tokyo, Japan (<i>Radio Japan</i>)	11700 9700 9638	4:30 p.m.	Jerusalem, Israel	9008
7:30-8:00 p.m.	Budapest, Hungary (<i>Radio Budapest</i>)	9515	5:15 p.m.	Belgrade, Yugoslavia	6100
7:30-8:00 p.m.	Prague, Czechoslovakia (<i>Radio Prague</i>)	9575, 6010	6:00 p.m.	London, England	15310, 11930, 9825
7:30-8:30 p.m.	Warsaw, Poland (<i>Radio Warsaw</i>)	15235, (JOB9), 11705 (JOA4)	6:00 p.m.	Tokyo, Japan	17825, 15235
7:55-8:45 p.m.	Montreal, Canada (<i>Radio Canada</i>)	11910, 9833	6:15 p.m.	Moscow, USSR	11937, 11890 11845, 11825 11805, 11740 11700 9700 9665
8:00-8:30 a.m.	Sofia, Bulgaria (<i>Sofia Calling</i>)	9585, 6170, 6105 9008	6:30 p.m.	Ankara, Turkey	9515
8:00-9:30 a.m.	Stockholm, Sweden (<i>Radio Sweden</i>)	9525, 6025	6:30 p.m.	Caracas, Venezuela	4970
8:00-10:30 a.m.	Cape Haitien, Haiti (<i>The Evangelistic Voice</i>) — no broadcast on Wednesdays and Thursdays	15190 (CKCX), 11720 (CHOF)	7:00 p.m.	Moscow, USSR	11937, 11890 11845 11815 11805 11740 11700 9700 9665
8:15-9:00 p.m.	Brazzaville, French Equatorial Africa (<i>Radio Brazzaville</i>)	9700	7:15 p.m.	Rome, Italy	9575, 6010
8:30-10:15 p.m.	Berne, Switzerland (<i>Switzerland Calling</i>)	9625	7:30 p.m.	Tokyo, Japan	15235, 11705
9:00-9:20 p.m.	Oslo, Norway (<i>Radio Norway</i>) — on Sundays only	15400 9608, 6105	7:30 p.m.	Prague, Czechoslovakia	9585, 6170, 6105, 6055
9:00-9:30 p.m.	Copenhagen, Denmark (<i>The Voice of Denmark</i>) — no English on Sundays	11970, 9825	7:30 p.m.	Warsaw, Poland	9525, 6025
9:00-12:00 p.m.	Quito, Ecuador (HCJR — <i>The Voice of the Andes</i>) — no broadcasts on Mondays	11865 (HE755), 9535 (HER4)	8:00 p.m.	Moscow, USSR	11890, 11845 11815, 11805 11740 11700 9700
9:25-9:45 p.m.	Rome, Italy (<i>Italian Broadcasting and Television System</i>)	6165 (HE753)	8:00 p.m.	Montreal, Canada	15190, 11720
9:30-9:40 p.m.	Cologne, Germany (<i>The Voice of Germany</i>)	15175, 11735 9540	8:00 p.m.	Warsaw, Poland	9575, 6025
9:30-10:00 p.m.	Warsaw, Poland (<i>Radio Warsaw</i>)	9520 (OZF)	8:15 p.m.	Sofia, Bulgaria	9700
9:30-10:10 p.m.	Hilversum, Holland (<i>Radio Netherlands</i>)	15115, 11915 9745	8:15 p.m.	Stockholm, Sweden	9570
9:30-11:00 p.m.	Hilversum, Holland (<i>The Happy Station</i>) — special program on Sundays only	15175, 11735 9540	8:30 p.m.	Brazzaville, French Equatorial Africa	11970 9635
9:30-11:00 p.m.	Port-au-Prince, Haiti (<i>Radio Haiti</i>) — on Thursdays only	15115, 11915 9745	8:30 p.m.	Montreal, Canada	11945, 9585
9:45-10:00 p.m.	Brazzaville, French Equatorial Africa (<i>Radio Brazzaville</i>)	6192 (4VHW)	9:00 p.m.	Moscow, USSR	11890, 11845 11825 11805, 11740 11700, 9665
9:55-10:35 p.m.	Montreal, Canada (<i>Radio Canada</i>)	11870, 9825	9:00 p.m.	Cologne, Germany	11795, 9640
10:00-10:30 p.m.	Bucharest, Romania (<i>Bucharest Calling</i>)	11845 (CKNK1) 9585 (CKLP)	9:30 p.m.	Warsaw, Poland	9525, 6025
10:00-11:00 p.m.	Prague, Czechoslovakia (<i>Radio Prague</i>)	11937, 9570	9:30 p.m.	Hilversum, Holland (not on Sundays)	11450, 9590
10:00-11:45 p.m.	Guatemala City, Guatemala (TGNA)	9585, 6170, 6105, 6055	9:45 p.m.	Brazzaville, French Equatorial Africa	11970, 9635
10:15-11:00 p.m.	Madrid, Spain (<i>The Voice of Spain</i>)	9585, 6130	10:00 p.m.	Montreal, Canada	11945, 9585
10:30-11:00 p.m.	Copenhagen, Denmark (<i>The Voice of Denmark</i>) — no English on Sundays	9520 (OZF)	10:00 p.m.	Moscow, USSR	11890, 11845 11825 11805, 11740 11700, 9665
11:00-11:30 p.m.	Budapest, Hungary (<i>Radio Budapest</i>)	11910 9833	10:15 p.m.	Bucharest, Romania	11937, 9570
11:00-11:30 p.m.	Sofia, Bulgaria (<i>Sofia Calling</i>)	9700	10:30 p.m.	Madrid, Spain	9340, 6130
11:00-12:00 p.m.	San Jose, Costa Rica (TIFC — <i>The Lighthouse of the Caribbean</i>)	9447, 6037	11:00 p.m.	Copenhagen, Denmark (Monday only)	9530
11:15-12:00 p.m.	Berne, Switzerland (<i>Switzerland Calling</i>)	11865 (HER5), 9535 (H11 H4)	11:00 p.m.	Sofia, Bulgaria	9700
11:30-12:00 p.m.	Madrid, Spain (<i>The Voice of Spain</i>)	9340, 6130	11:00 p.m.	Moscow, USSR	11890, 11845 11825 11805 11740 11700
12:00-12:30 p.m.	Bucharest, Romania (<i>Bucharest Calling</i>)	11937 9570	11:15 p.m.	Madrid, Spain	9340, 6130
12:00-2:30 a.m.	Stockholm, Sweden (<i>Radio Sweden</i>)	11937 9570	11:20 p.m.	Berne, Switzerland	11845, 9535
12:15-12:30 a.m.	Brazzaville, French Equatorial Africa (<i>Radio Brazzaville</i>)	9620	11:30 p.m.	Bucharest, Romania	11937, 9570
12:15-1:00 a.m.	Madrid, Spain (<i>The Voice of Spain</i>)	11970	11:30 p.m.	Stockholm, Sweden	9620
12:30-1:00 a.m.	Warsaw, Poland (<i>Radio Warsaw</i>)	9380 6190	12:00 Noon	Moscow, USSR	11860 11845 11805 11740 11700 9665 9610
		9008 6025	12:15 a.m.	Madrid, Spain	9340 6130
			12:15 a.m.	Brazzaville, French Equatorial Africa	1970
			12:30 a.m.	Warsaw, Poland	9525, 6025



IN THE EVENT OF DIFFICULTY

Carefully recheck all wiring, and inspect solder connections. If you have not already done so, trace each lead in the pictorials with a colored pencil. If a voltmeter is available, make measurements referring to the voltage chart (P. 16). A deviation of $\pm 20\%$ from the indicated values may be considered normal. **WARNING:** Use caution when making any checks with the KT-135 turned on. If any voltage is incorrect, recheck that part of the circuit involved carefully. If one of the components appears to be at fault, try to locate the defective one. In the event that these checks do not enable you to correct the defect, the receiver may be returned to us for repair. The charge for this service is \$4.00, plus the cost of any parts which have been damaged during installation in the kit through improper handling or soldering. Kits which were not wired in accordance with our detailed instructions, or kits wired with acid core solder or paste flux are not eligible for service, and will be returned to you at your expense.

SHIPPING INSTRUCTIONS

If the kit must be returned for service, pack it carefully, making sure that separate or loose parts are adequately covered to prevent damage and movement. The carton in which the equipment was shipped may be used, provided shredded paper or excelsior is used around the unit. Mark the shipment FRAGILE. Ship by prepaid express if possible. Shipment to you will be by express collect. Bear in mind that the carrier will disclaim responsibility for damage if in his opinion it was caused by improper packing.

REPLACEMENT WARRANTY

In accordance with the terms of the industry-wide Electronics Industry Association (EIA) warranty, Lafayette Radio will replace, free of charge, any defective parts returned to us within 90 days from date of purchase of this kit by the original purchaser. Such replacement will be made only in cases where parts were defective at the time of sale, or became defective in normal operation during the 90 day warranty period. Parts damaged during kit construction or through customer's wiring error are not subject to replacement.

